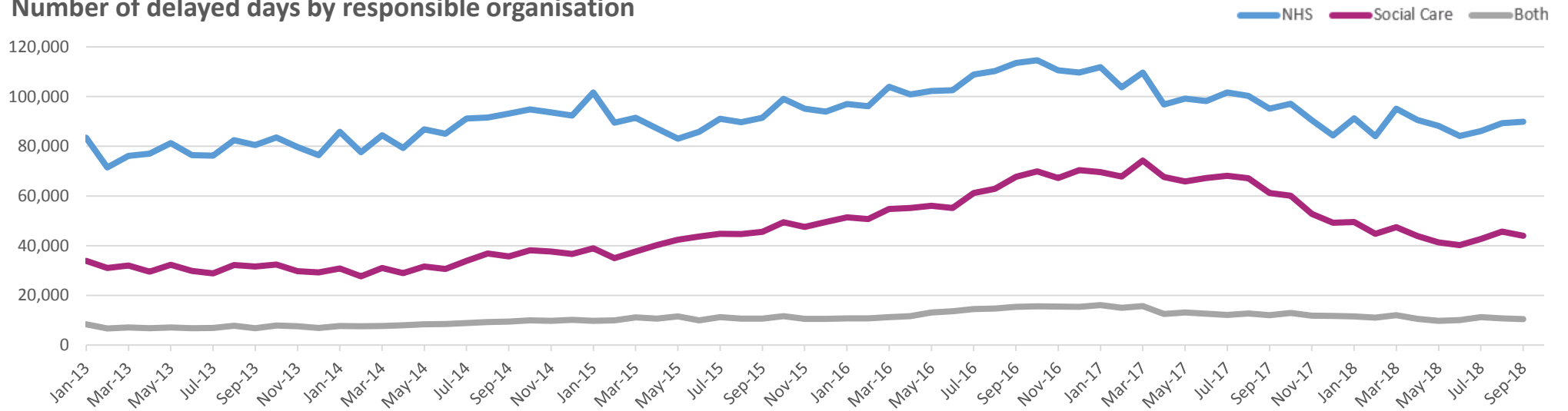
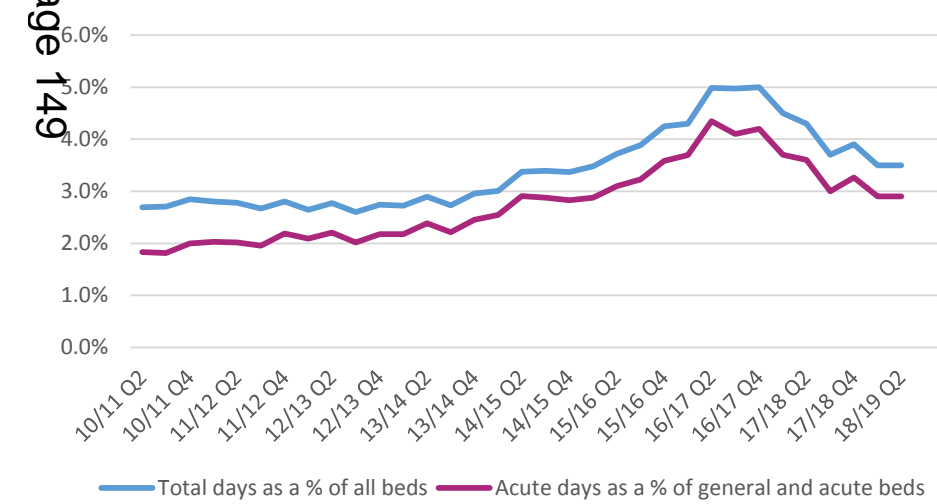


Number of delayed days by responsible organisation



Page 149

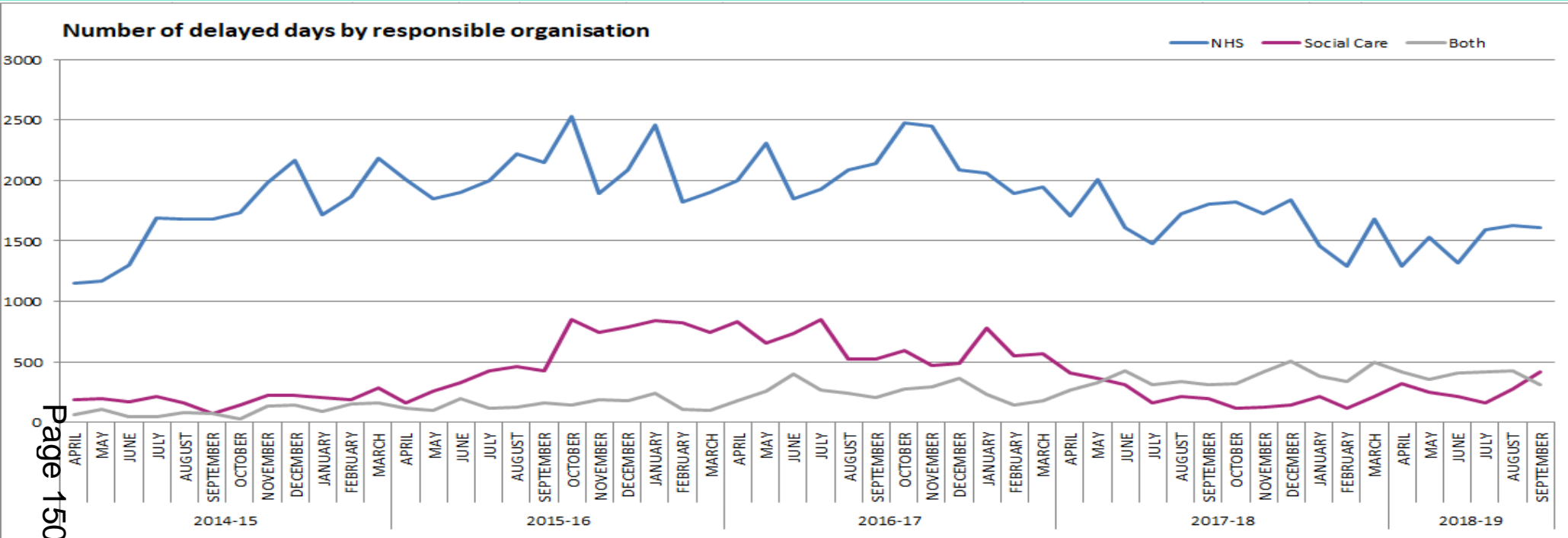
Number of delayed days as % of available beds



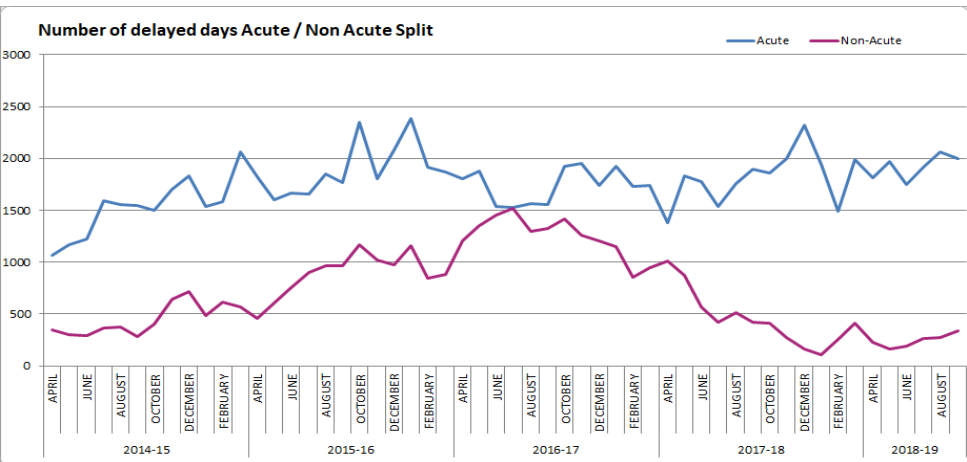
		Sept 18	Sept 17	Change
Total	Number of delayed days, of which	144,267	168,041	-14.1%
	...attributable to NHS	89,873	95,348	-5.7%
	...attributable to social care	43,960	60,396	-27.2%
	... attributable to both sectors	10,434	12,297	-15.2%
		Sept 18	Sept 17	Change
	Number of DTOC beds, of which	4,809	5,601	-14.1%
	...attributable to NHS	2,996	3,178	-5.7%
	...attributable to social care	1,465	2,013	-27.2%
	...attributable to both sectors	348	410	-15.1%

62.3%	of all delayed days were attributed to the NHS (Sept-18)	24.7%	of these were due to patients awaiting further non-acute NHS care
30.5%	of all delayed days were attributed to social care (Sept-18)	35.3%	of these were due to patients awaiting care package in their own home

Number of delayed days by responsible organisation



Number of delayed days Acute / Non Acute Split

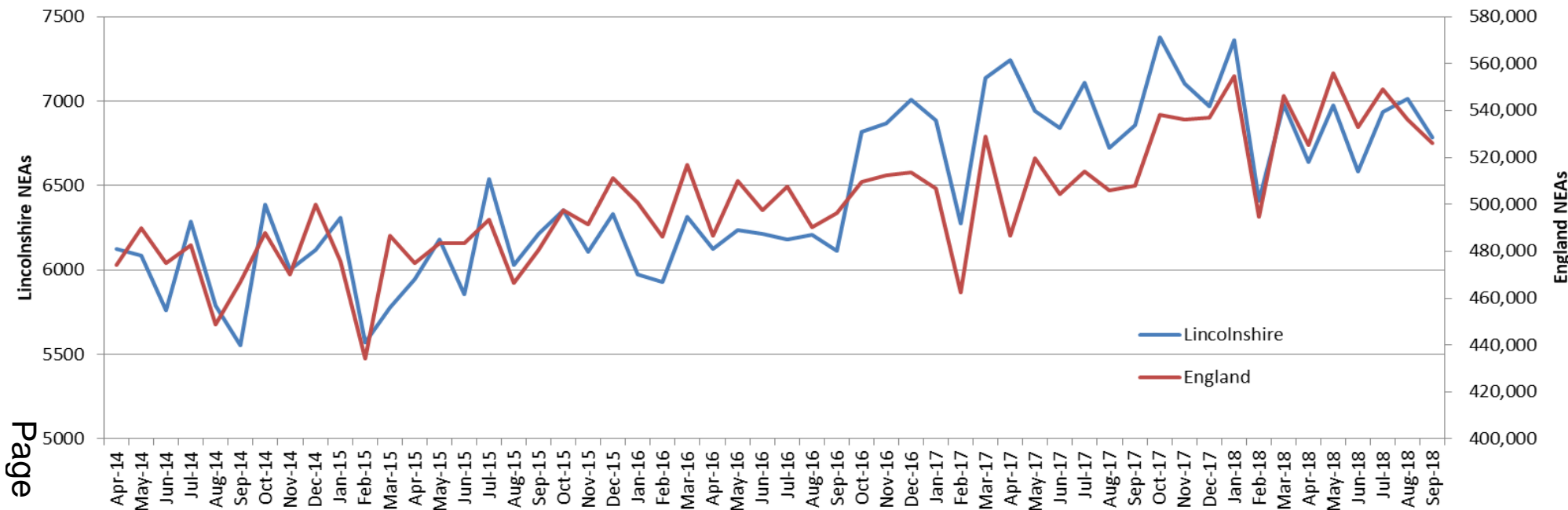


		Sep-18	Sep-17	Change	*Quartile
Total	Number of delayed days, of which	2,340	2,313	1.2%	3rd
	...attributable to NHS	1,614	1,804	-10.5%	4th
	...attributable to social care	418	201	108.0%	2nd
	... attributable to both sectors	308	308	0.0%	4th
		Sep-18	Sep-17	Change	
	Number of DTOC beds, of which	78	77	1.2%	
	...attributable to NHS	54	60	-10.5%	
	...attributable to social care	14	7	108.0%	
	...attributable to both sectors	10	10	0.0%	

*Based on delayed days per 100k population for English County Local Authorities

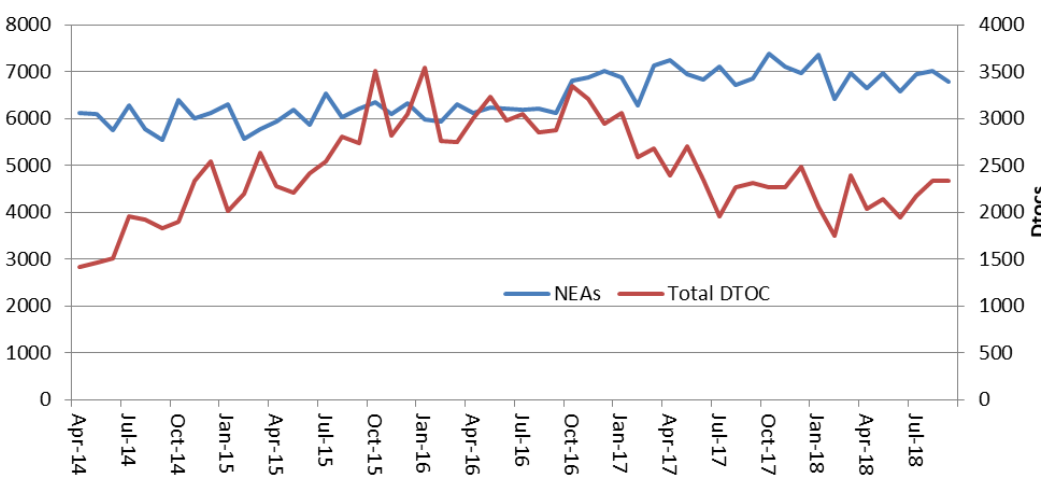
69.0%	of all delayed days were attributed to the NHS (Sep-18)	32.8%	of these were due to awaiting further non acute NHS care
17.9%	of all delayed days were attributed to social care (Sep-18)	67.9%	of these were due to awaiting care package in their own home

Lincolnshire NEAs Compared to England NEAs



Page 151

Total Lincolnshire Delayed Days and Non Elective Admissions



NEAs	Sept-18	Sept-17	Change
Lincolnshire	6,786	6,858	-1.0%
England	535,995	505,781	3.6%
Lincolnshire	Sept-18	Sept-17	Change
Total DTOC	2,340	2,313	1.2%
Total NEAs	6,786	6,858	-1.0%

This page is intentionally left blank